

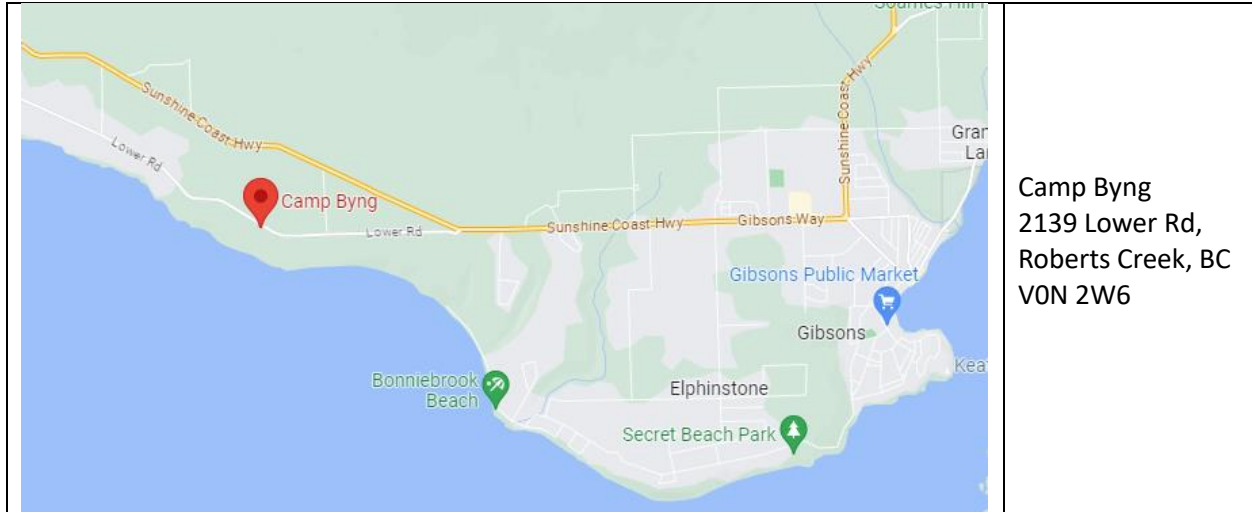
# Camp Mardi Gras Emergency Response Plan

**2023 Edition**

**Camp Byng, Roberts Creek, BC September 29 – October 1, 2023**

# Table of Contents

- Emergency Contacts ..... 3
- Camp Contacts ..... 4
- Directions to Hospital ..... 4
- Response Plans -Code Green- Evacuation ..... 5
- Code Green- Shelter in Place..... 6
- Code White – Lockdown..... 7
- Code White -Secure the Campgrounds..... 7
- Code White-Police Related Emergency..... 7
- Code White – Active Shooter..... 8
- Code Yellow-Missing Person ..... 8
- Code Blue- First Aid or Medical Incidents..... 9
- Code Red- Fire Incident ..... 9
- Code Brown-Hazardous Materials Incident..... 9
- Code Brown – Falling Debris..... 9
- Map of Muster Points ..... 10
- Map of Helicopter. EMS Staging Area..... 11



Camp Byng  
2139 Lower Rd,  
Roberts Creek, BC  
V0N 2W6

<b>External Emergency Services</b>			
<b>Emergency Service type</b>	<b>Paramedic Service</b>	<b>Fire Department</b>	<b>Police Department</b>
Name of Service	EMS	Fire and Emergency Services	North Pole Provincial Police
Emergency Number	911	911	911
Non-Emergency Number	911	604-740-2595	911
Nearest Station Location	BC Ambulance Service Station 261	Gibsons and District Fire Department	RCMP Sunnycrest Rd
Response Time	10-40mins	8-15 Mins	10-60 Mins

<b>Other Emergency Numbers</b>	
Poison Control	1-800-567-8911
Conservation Officer	1-800-663-9453
Sechelt General Hospital	604-885-2224

Camp Contacts			
Name	Phone Number	Email address	Role
Jackson Spencer	604-346-5305	<a href="mailto:Jacksonspencer08@gmail.com">Jacksonspencer08@gmail.com</a>	Camp Chief
Becky Knight	604-816-0135		Camp Adult

**Direction to Local Hospitals**

**North Pole General Hospital**

Sechelt Hospital, 5544 Sunshine Coast Hwy  
604-885-2224

Scouts Canada Camp Byng

2139 Lower Rd, Roberts Creek, BC  
V0N 2W6

- Take Lower Rd northwest (turn right leaving camp)
- Turn right onto Joe Rd
- Turn left onto Sunshine Coast Hwy/BC-101N
- Turn right onto Ti'Ta way

Hospital will be on your left.

**Response Plans**

**On-site evacuation: In the event of medical emergency evacuation back to the first aid station: (CODE GREEN)**

1. The responding First Aid team will contact the First Aid Coordinator if a patient requires evacuation back to the first aid post.
2. The First Aid Quick Response team (QRT) will respond to the location with a golf cart or cart to get the patient
3. The First Aid team will stabilize the patient until the QRT is on the scene to transport the patient.
4. If additional assets are required, the First Aid Coordinator will coordinate with the Coordinators of each area.
5. Roadways should be kept clear during this time if possible
6. Once the patient is back at First Aid patient will be assessed and if needed the off-site medical emergency evacuation protocol will be started.
7. **Safe Scout App Completed within 24 hours**

**In the event of a nonemergency evacuation on-site evacuation: (CODE GREEN)**

1. Camp Chief will discuss the situation with Assistant camp Chief and staff that is requiring an evacuation from the area. Once a plan is formed the appropriate resources will be used.
2. If there is a time a notice will be sent out to all campers to pack up their personal belongings and be assigned an evacuation time
3. If time is a factor Camp Safety will assist in going to each affected area and telling people to evacuate immediately out of the area, If able to team will assist with using tractors, trailers, and pickup trucks to carry personnel and gear to the loading zone.
4. The emergency Staging zone is the flag poles beside the primary camp building with the roadway to be kept free from traffic.
5. **Safe Scout App Completed within 24 hours**

**Off-Site evacuation: (CODE GREEN)**

1. In the event of the need to evacuate due to a medical emergency:
2. The on-site First Aid Coordinator will make the call for an ambulance to attend to the medical emergency onsite.
3. The First Aid Coordinator will notify the Camp Chief that an ambulance will be requested
4. The Assistant Camp Chief will ensure the most direct route is open and an escort vehicle is staged ready to bring the ambulance to the location is needed
5. Once the Ambulance is on-site it will be brought to the emergency location and the First Aid Coordinator will coordinate the transfer of the patient to the Ambulance crew.
6. Camp Safety will escort vehicle will escort the ambulance off the property.
7. In the event of a non-medical emergency evacuation of the campground:
8. All campers will be notifying an evacuation will be happening, each subcamp will be assigned a specific time of evacuation off-site.
9. The Camp Chief organize the evacuation with the Camp Coordinator. The First Aid Coordinator will notify the local Emergency Services of the evacuation being commenced.
10. The Assistant Camp Chief will organize the traffic coming into and out of the camp.
11. Quartermaster will organize the movement of personnel and gear to the evacuation staging area.
12. Each sub-camp will move to the evacuation point and load onto the transportation arranged to take the campers off-site. 6) Camp Safety will perform a sweep of the grounds and sub-camps to ensure the grounds are fully evacuated
13. Once the campground has been fully cleared all Coordinators will evacuate the grounds.
14. **Safe Scout App Completed within 24 hours**

**Shelter in place (CODE GREEN)**

1. In the event of having to get personal inside a message will be broadcasted over the camp radios.
2. All personnel will try to get into the camp main building, barn, subcamp site huts, and if open across Lower Rd road into the Camp Byng buildings
3. All sub-camps will be designated evacuation buildings to go to
4. All Scouters will ensure all their campers are with them upon evacuation
5. All Scouters will conduct a head count upon leaving and arriving at the evacuation building
6. Once in the building, everyone will crouch down or sit on the ground and keep noise to a minimum and await further instructions
7. Once the all-clear has been announced all scouters will conduct a head count of their campers and will be allowed to return to camp.
8. **Safe Scout App Completed within 24 hours**

**Lockdown (CODE WHITE)**

1. Camp Safety will close all three entrances into the campground once the command has been given by the Camp Coordinator.
2. The coordinator of Camp Safety will be the lead in securing the campground with the camp Coordinator.
3. If Camp Safety requires assistance the Camp Chief will always contact the police department for assistance with securing the camp to ensure safety.
4. All campers and scouters will be told to return to their campsite.
5. All Scouters will conduct a head count of all campers at their site and inform the sub-camp Coordinator all campers are accounted for.
6. Once each sub-camp has a check-in of all sites, they will notify the camp Coordinator their sub-camp is secured.
7. Only Emergency personnel will be allowed to enter and exit the camp during an event leading to the securement of the campground.
8. Once the incident that caused the campground to go into lockdown is deemed over all clear will be provided by the camp Coordinator and Camp Safety Coordinator.
9. **Safe Scout App Completed within 24 hours**

**Securing the campgrounds (CODE WHITE)**

Camp Safety will close all three entrances into the campground once the command has been given by the Camp Coordinator.

1. The coordinator of Camp Safety will be the lead in securing the campground with the camp Coordinator.
2. If Camp Safety requires assistance the Director of Emergency Services and Safety will always contact the police department for assistance with securing the camp to ensure safety.
3. All campers and scouters will be told to return to their campsite.
4. All Scouters will conduct a head count of all campers at their site and inform the sub-camp Coordinator all campers are accounted for.
5. Only Emergency personnel will be allowed to enter and exit the camp during an event leading to the securement of the campground. Once the incident that caused the campground to go into lockdown is deemed over the all-clear will be provided by the camp Coordinator and Camp Safety Coordinator.
6. **Safe Scout App Completed within 24 hours**

**Police-related emergency (CODE WHITE)**

1. If the police are needed for the area a call will be made to Camp Safety and the camp Coordinator to inform them of the situation
2. If the police are needed and a verbal message can not be transmitted Code 10-200 will be used to radio Police assistance is required
3. **IF THERE IS A LIFE AND DEATH SITUATION THAT POLICE ARE REQUIRED RIGHT NOW CODE 10-200 WILL BE USED**

4. Camp Safety will meet the responding police unit at the gate and direct them to the location.
5. Camp Safety will keep a perimeter around the location to allow for privacy and maintain Camp Safety during the incident.
6. Once the police-related emergency is over a debrief of the situation will occur between the Coordinators of the camp.
7. **Safe Scout App Completed within 24 hours**

#### **Active Shooter (CODE WHITE)**

1. Contact 911 immediately.
2. If it is safe to do so, take cover in a concrete building, try to avoid wooden structures if possible.
3. If you cannot seek shelter, evacuate into the surrounding area and keep low to the ground.
4. Follow the lockdown procedure above.
5. Follow all directions of the police and ambulance services.
6. **Safe Scout App Completed within 24 hours**

#### **Missing Person (CODE Yellow)**

##### Lost Camper/Person

1. Camp Safety will close the entrances down and inform the Camp Chief that there is a missing Camper/ Person.
2. Camp Safety HQ marked on the map below will become the command post for this incident.
3. Dispatch for Camp Safety will declare a Code **YELLOW** across all Emergency Services Radios.
4. Camp Safety and Camp staff will fan out across the grounds in an organized search pattern until the camper is found. Searchers will be paired with a member of the Emergency Services with a Radio.
5. Announcement will be made across all camp radios that there is a missing camper/person.
6. A search of the campground will be completed
7. If the camper can not be located within 30 mins of the search of the grounds the Emergency Services and Safety Director will get additional resources as required for the search.
8. All campers will be instructed to return to their Sub camps and campsite and wait for further instruction. The leaders in charge will take a head count a report it to Sub Camp Coordinator
9. Once the missing camper is located all clear will be given across the campsite) The search will be completed in a uniform and safe manner.
10. **Safe Scout App Completed within 24 hours**



## First Aid and Medical incidents (CODE BLUE)

1. If the injured person can be brought and transported to First Aid this must happen ASAP
2. If the Injured person can not be transported to First Aid, An Emergency radio message must be sent to First Aid with the nature of the incident and Injury with detailed location instructions for First Aid.
3. If an ambulance ground or air is required, then Camp Safety must prepare for escorting the ambulance from the roadway to the location where the site is needed. Ensuring camper's safety always.
4. Once the Ambulance is off-site the Medical Emergency will be declared completed with a debrief of the camp Coordinator at First Aid to follow the incident.

### Heat Exhaustion

Given the recent increase in heat in the summer months, the camp staff will be vigilant for any participants demonstrating signs of heat exhaustion including Headache, Nausea, Dizziness, Weakness, Irritability, Thirst and Heavy sweating or Elevated body temperature. If a participant demonstrating these symptoms is discovered, the participant will be removed from the hot area and be given fluids. Unnecessary clothing will be removed (shoes and socks), and wash face, head and neck with cold water.

### Heat Stroke

If a participant begins demonstrating confusion, altered mental status, slurred speech, loss of consciousness (coma), very high body temperature, and hot, dry skin or profuse sweating, take the above steps for heat exhaustion and call 911 for emergency medical care.

### Safe Scout App Completed within 24 hours

## Fire Emergency (CODE RED)

1. Evacuate the immediate area.
2. If safe to do so and properly trained attempt to extinguish the fire with a fire extinguisher, if not safely evacuate the area
3. Notify Emergency Response Team that there is a fire and the exact location of the fire
4. The fire department will be called 911 by the ERT
5. ERT will respond to the location.
6. Camp Safety will secure the area around the fire ensuring there is no one in danger and wait for the Fire Department to escort them to the site of the fire
7. First Aid will be standing by to treat any injuries from the fire.
8. Once the fire is out and the area is deemed safe the all-clear message will be sent out over the radio
9. **Safe Scout App Completed within 24 hours**

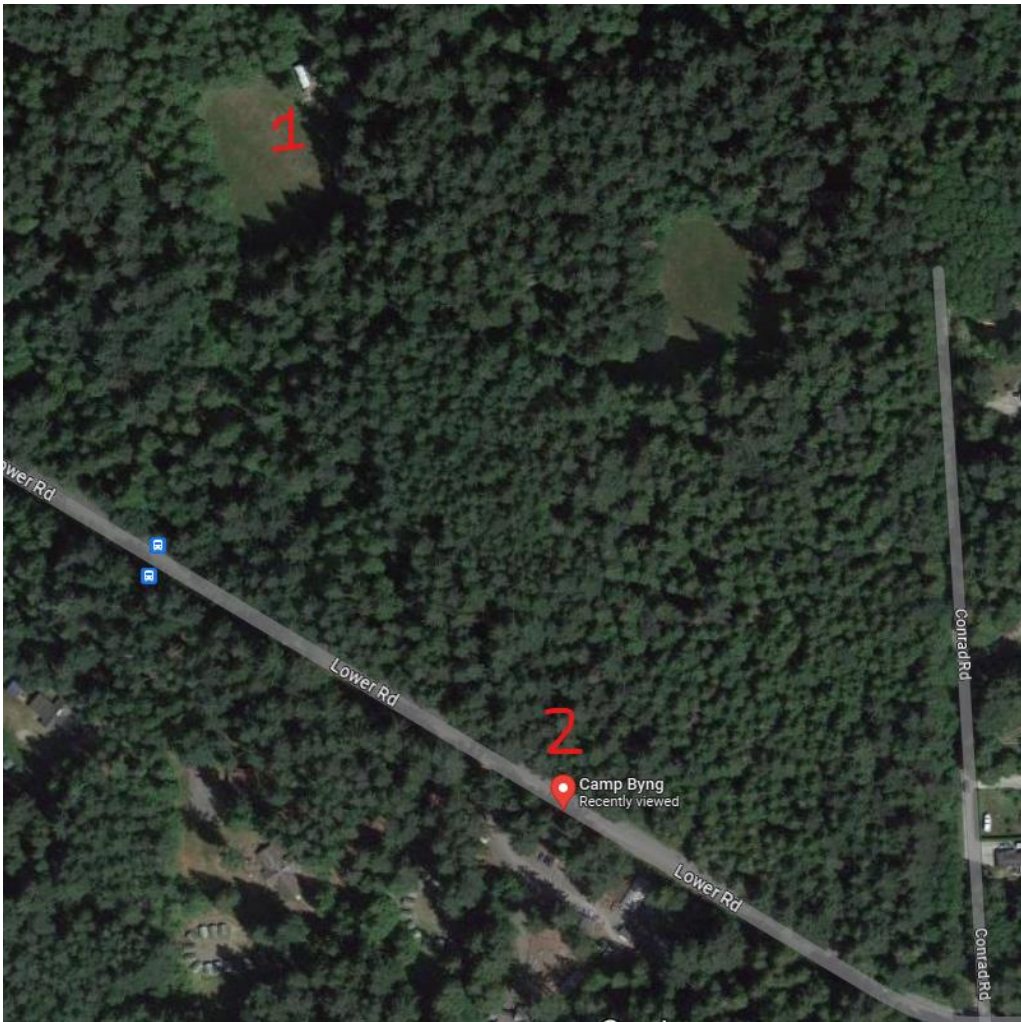
### Hazardous Materials Incident (CODE BROWN)

1. In the event of an onsite Hazardous situation that occurs the Camp Chief shall be notified immediately
2. The location of the hazard will be assessed by the Emergency Services and Camp Safety for the extent of the hazard.
3. Once the nature of the hazard is determined the DESCs will arrange for the required resources to repair the hazard and isolate campers from the Hazard
4. If an evacuation is required (Code Green) those protocols will be called into effect.
5. Once the hazard has been corrected an All clear will be given
6. **Safe Scout App Completed within 24 hours**

### "Drop, cover, and hold" – For protection from falling debris. (CODE BROWN)

1. If severe weather is approaching message will be sent across all camp radios to inform campers of Impending weather.
  2. Campers will be told to remove themselves from any area that could cause objects to fall from above on top of them.
  3. If campers can not get into an open area camper are to try to crawl under a sturdy object like a picnic table and crouch down.
  4. If campers can not get under a hard-sturdy surface camper are to drop to the ground and cover their heads with their hands.
  5. Campers are to hold their hands over their head until the all-clear is given.  
If injured by a falling object the injured camper needs to be kept from moving and an Emergency medical call is sent out over the radio with the description of the injury and location to the First Aid team.
- Safe Scout App Completed within 24 hours**

## Map of Muster Points



## Map for Helicopter Landing or Emergency Services

